



# The Wood Design Awards 2003

A NORTH AMERICAN PROGRAM OF ARCHITECTURAL EXCELLENCE



## Milanville House

BONE/LEVINE ARCHITECTS

Originally built as a barn about 1850 and known to have been a station on the Underground Railroad, the weekend house is located at the base of a mountain overlooking the Delaware River in Milanville, Pennsylvania.

The desire to preserve the integrity of the post and beam barn, the elegantly proportioned interior, and the spirit of the place, led to its reincarnation as a one-room house. The salvageable components of the barn including the post and beam timber structure and roof, barn board siding, and bluestone foundation walls were incorporated into the design of the new building.

The original barn was supported on timber cribs until a new foundation was constructed consisting of a concrete wall at the fully backfilled west wall, and stud walls on stepped footings elsewhere where backfill is minimal. The new foundation, clad with the original bluestone, extends beyond the perimeter of the original structure thus allowing the timber structure to maintain an independent identity within the new house. The north, south and west walls are insulated 2x6 wood stud curtain walls.

The post and beam structure continues to support the roof and two sleeping lofts as well as the river-facing, east facade where an operable wall of glass doors, wood shutters, insect screens and wooden blinds hang from tracks. The wall is operable across the length of the facade for an adaptable interface between interior and exterior.





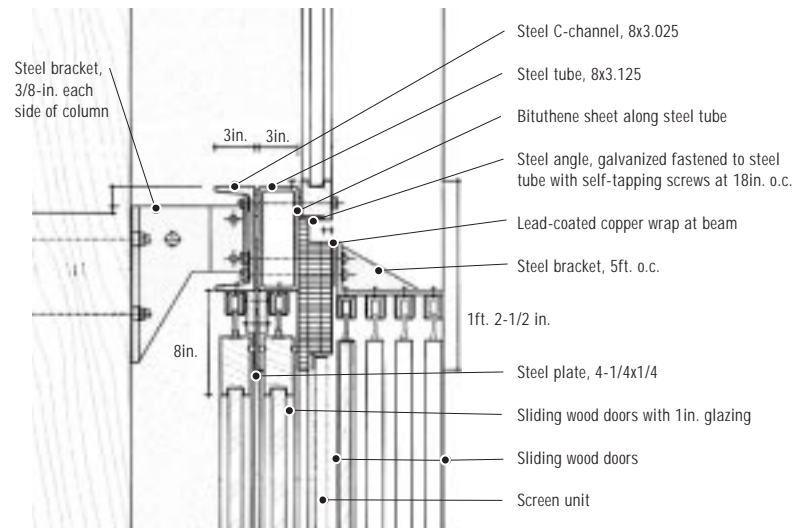
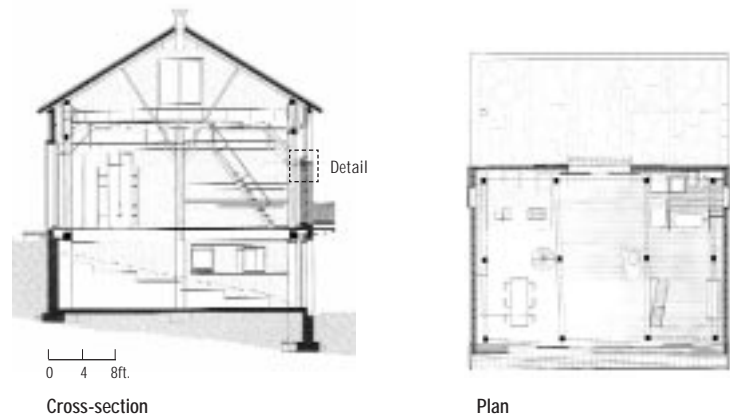
Only one timber cross beam was replaced, however, the roof is reinforced by hollow steel Y-braces supporting steel I-beam purlins at the mid-span of the log rafters. Inserted steel tension cables improve the lateral resistance of the timber frames.

The project is designed as a single, large cabinet. Beyond the exposed timbers, the interior floors are finished with cherry, and all cabinets cleanly detailed with maple-veneer plywood. Windows on the gable ends are "outboard" of the wall so that when opened one sees an unadorned punched opening from the inside.

The original barn board siding that allowed sliver-rays of light into the interior were reused as sliding shutters in front of the glass for lighting control, privacy, protection from the elements, and memory.

*Jury – With re-used exterior siding over the original timber frame, and by retaining its position on the site, the barn is as a ghost of its former life. The exterior detail is exquisite with windows pushing through the facade, and with vertical spaces between board siding on sliding doors allowing penetration of light.*





Detail: East wall, connection of track assembly to timber column



## Product Specs

### Frame

- Timber frame with re-use of original timbers and some new timbers with insulated, painted drywall 2x6 stud walls as exterior curtain walls; original log rafters and wood deck boards braced by a new steel purlin system; lead-coated copper standing seam on rigid insulation board over 3/4-in. plywood sheathing and original roof boards; floor joists 2x10 for main floor and lofts

### Exterior

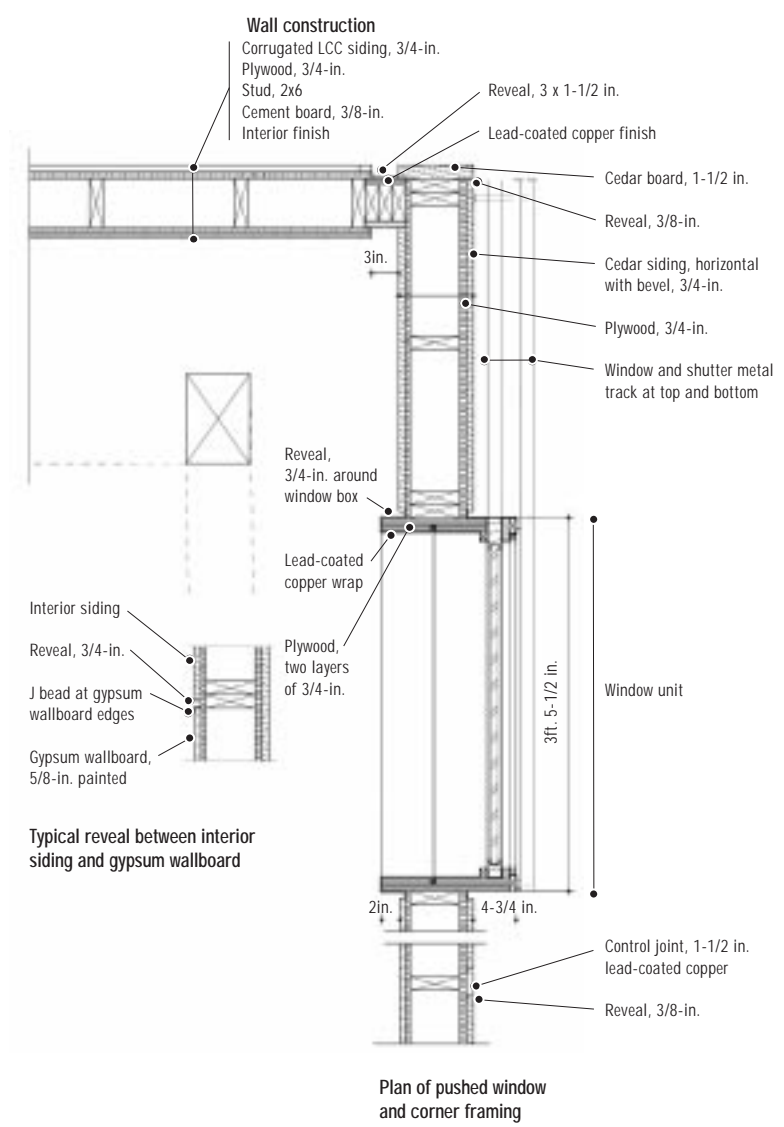
- Stained shiplap western red cedar siding finished with grey-pigmented boiled linseed oil by Wilbur + Williams
- High performance Coatings / California Paints, Storm Stain

### Interior

- Painted drywall finish with some cement board panels; cherry flooring and maple veneer plywood cabinets finished with clear lacquer by Chemtec: Opticlear 900

### Windows/doors

- Custom made in recycled yellow pine by the building contractor



**CLIENT**  
J. Cyphers and J. Levine, Brooklyn, New York

**ARCHITECT**  
Joe Levine, Bone/Levine Architects, New York, New York

**STRUCTURAL ENGINEER**  
Edy Zingher, ETNA Consulting, New York, New York

**GENERAL CONTRACTOR**  
Larry Braverman, Beach Lake, Pennsylvania

**PHOTOS**  
Jacek M. Kucy, JMK-Gallery.com, New York, New York